



DIAPHRAGM PUMP

HF-9200



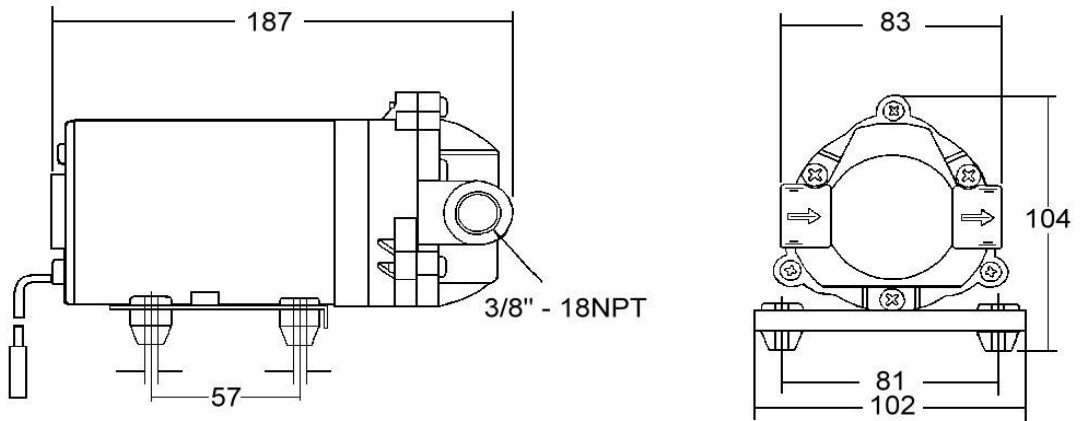
SPECIFICATIONS

- MODEL NUMBER: HF-9200 (30VDC)
- PUMP DESIGN: positive displacement three chamber diaphragm pump
- CAM: 3 degree
- MOTOR: permanent magnet
- VOLTAGE: 30VDC
- PRESSURE SWITCH: none
- LIQUID TEMPERATURE: 65 °C (149 ° F) max.
- RUNS DRY WITHOUT DAMAGE
- PRIME: self-priming up to 2 meter
- PORTS: 3/8"-18 NPT female
- MATERIAL OF CONSTRUCTION: PLASTICS - NYLON,
VALVES - EPDM, DIAPHRAGM - SANTOPRENE
- NET WEIGHT: 2.12 kg
- DUTY CYCLE: continuous
- TYPICAL APPLICATIONS: R.O. booster pump and water delivery
- BYPASS: 150 PSI



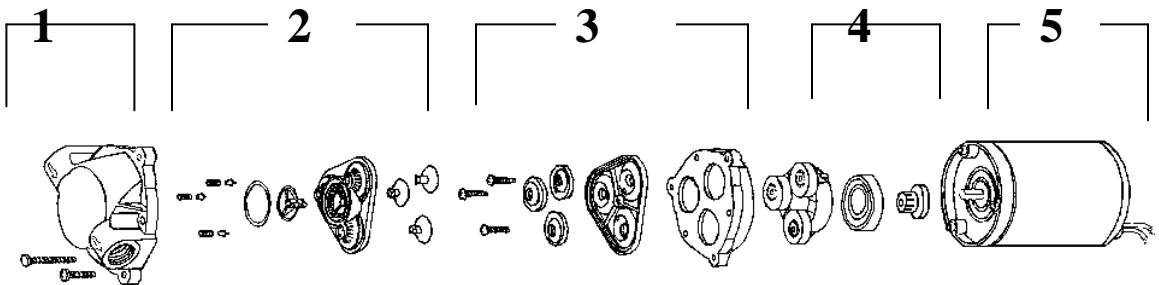
DIAPHRAGM PUMP

HF-9200



(UNIT : mm)

DIMENSIONS



1	UPPER HOUSING
2	BYPASS VALVE AND DISCHARGE VALVE ASSEMBLY
3	DIAPHRAGM AND PISTON COMPONENTS
4	DRIVE ASSEMBLY
5	MOTOR ASSEMBLY (LESS BASE PLATE)


DISASSEMBLY



DIAPHRAGM PUMP

HF-9200

INLET : 8 psi		
PRESSURE (psi)	FLOW (L/min)	CURRENT (amps)
Open flow	3.10	0.26
10	2.70	0.33
20	2.50	0.46
30	2.40	0.57
40	2.30	0.68
50	2.20	0.78
60	2.10	0.87
70	2.00	0.98
80	1.90	1.08
90	1.80	1.16
100	1.60	1.27
110	1.00	1.36
120	0.40	1.48
130	0.10	1.55
140	By pass	1.69
<ul style="list-style-type: none"> ● ALL DATA BASED ON TESTING WITH WATER ● VOLTAGE (VOLTS): 30VDC /2A / ADAPTOR 		
NOTE: PERFORMANCE WILL VARY WITH VARIATION IN SERVICE VOLTAGE		
AND TRANSFORMER OUTPUT		



DIAPHRAGM PUMP

HF-9200

MODEL NO.

- DO NOT USE WITH FLAMMABLE LIQUIDS
- MOTOR DUTY CYCLE WILL VARY WITH LOAD AND AMBIENT TEMPERATURE

VOLTS 30 VDC OPEN FLOW 3.1 LPM

MFG DATE MFG NO

CE



DIAPHRAGM PUMP

HF-9200



Certificate of Test

WE HEREBY CERTIFY THAT:

Certificate No.: R06032802E-A01

ALWAYS-JEAK CO., LTD.

3F, NO.22-5, ersheng 2nd siang, Kaohsiung, Taiwan.

DIAPHRAGM PUMP

HF-8367

HF-8385, HF-8367S, HF-9050, HF-9100, HF-9200



AND KEEPS ALL REQUIREMENTS ACCORDING THE FOLLOWING REGULATIONS

Test Standards:

EN 55014-1:2002:

EN 61000-3-2: 2000, EN 61000-3-3:1995+A1:2001

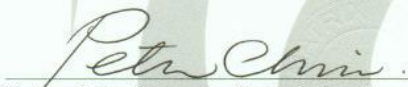
IS IN COMPLIANCE TO THE EUROPEAN COUNCIL DIRECTIVE 2004/108/EC
WITHIN CE MARKING REQUIREMENT.

Name of Laboratory : Matrix Test Laboratory

Site Location : 2F, No 146, Jian Yi Rd, Chung-Ho City, Taipei Hsien, Taiwan, R.O.C.

Issue Date : Feb. 24, 2009

Approved by :

 / Managing Director

This certification shall not be reproduced without the written approval of the laboratory.
The certification is valid only in accordance with the test report No. R06032802E-A01. The confirmation is valid only if the product is manufactured in accordance with the test report.