



DIAPHRAGM PUMP

HF-8367



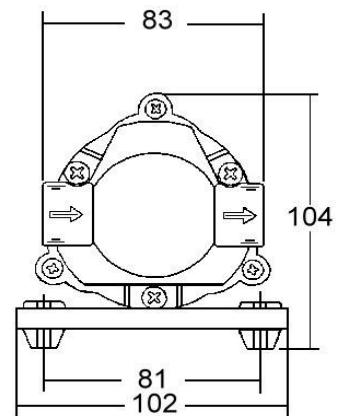
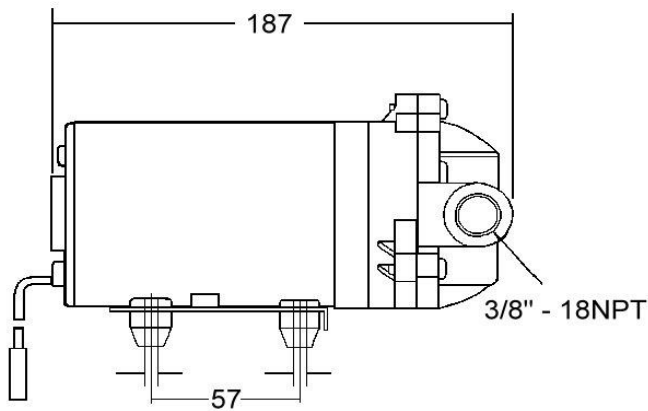
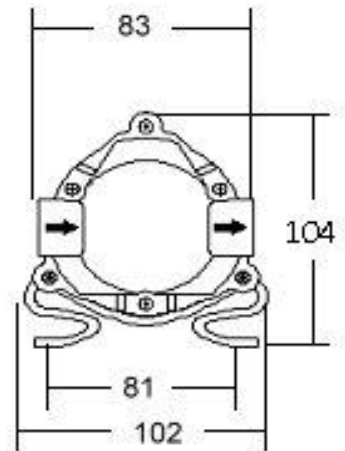
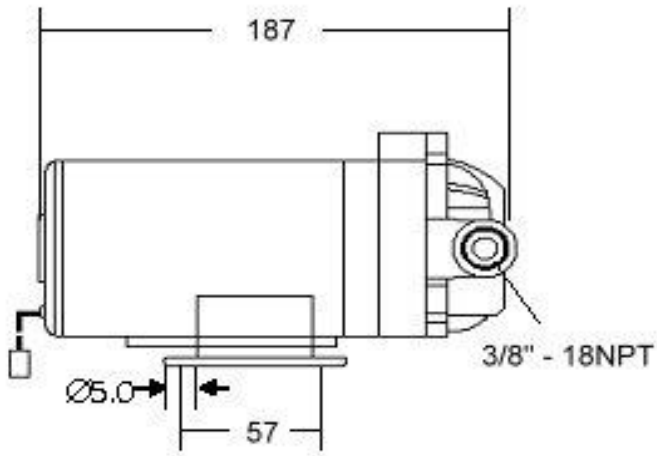
SPECIFICATIONS

- MODEL NUMBER: HF-8367
- PUMP DESIGN: positive displacement three chamber diaphragm pump
- CAM: 2.2 degree
- MOTOR: permanent magnet
- VOLTAGE: 24VDC
- PRESSURE SWITCH: none
- LIQUID TEMPERATURE: 65 °C (149 ° F) max.
- RUNS DRY WITHOUT DAMAGE
- PORTS: 3/8"-18 NPT female
- MATERIAL OF CONSTRUCTION: PLASTICS - NYLON, VALVES - EPDM, DIAPHRAGM - SANTOPRENE
- NET WEIGHT: 1.85 kg (Plastic plate) 1.93 kg (Iron plate)
- DUTY CYCLE: continuous
- TYPICAL APPLICATIONS: R.O. booster pump and water delivery
- BYPASS: 125psi



DIAPHRAGM PUMP

HF-8367



(UNIT : mm)


DIMENSIONS



DIAPHRAGM PUMP

HF-8367

INLET : 8 psi		
PRESSURE (psi)	FLOW (L/min)	CURRENT (amps)
Open flow	1.20	0.21
10	1.09	0.26
20	1.01	0.30
30	0.95	0.36
40	0.91	0.42
50	0.86	0.49
60	0.81	0.54
70	0.72	0.60
80	0.58	0.65
90	0.35	0.70
100	0.17	0.75
125	BY PASS	0.85
<ul style="list-style-type: none"> ● ALL DATA BASED ON TESTING WITH WATER ● VOLTAGE (VOLTS): 24VDC / 1.2A / ADAPTOR 		
NOTE: PERFORMANCE WILL VARY WITH VARIATION IN SERVICE VOLTAGE AND TRANSFORMER OUTPUT		




DIAPHRAGM PUMP
HF-8367

MODEL NO.

- MAXIMUM OUTLET PRESSURE 125 PSI
- DO NOT USE WITH FLAMMABLE LIQUIDS
- MOTOR DUTY CYCLE WILL VARY WITH LOAD AND AMBIENT TEMPERATURE

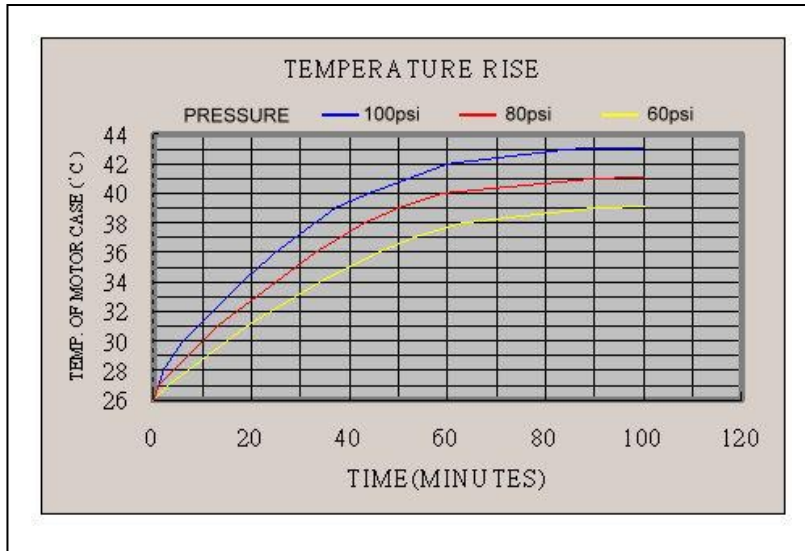
VOLTAGE 24 VDC OPEN FLOW 1.2 LPM

MFG. DATE MFG. NO. **0537080** 

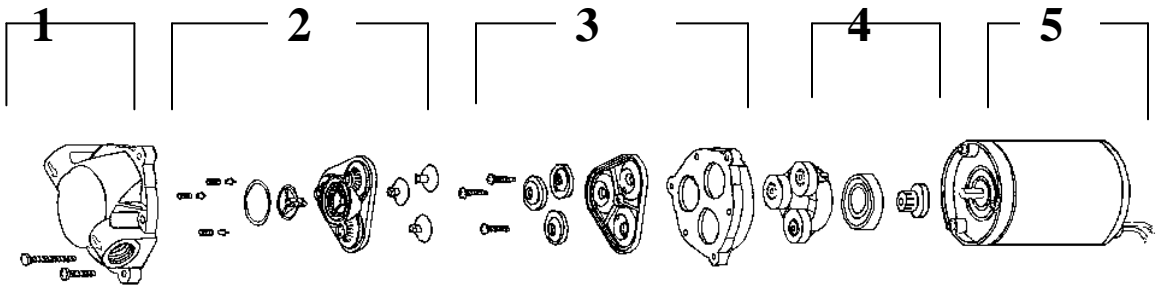


DIAPHRAGM PUMP

HF-8367



THIS TEST IS BASED ON RUNNING CONTINUOUSLY WITH AN AMBIENT TEMPERATURE OF 26 °C IN STILL AIR



1	UPPER HOUSING
2	BYPASS VALVE AND DISCHARGE VALVE ASSEMBLY
3	DIAPHRAGM AND PISTON COMPONENTS
4	DRIVE ASSEMBLY
5	MOTOR ASSEMBLY (LESS BASE PLATE)

DISASSEMBLY



DIAPHRAGM PUMP

HF-8367

SGS Taiwan Ltd.
E&E Laboratory
134, Wu Kung Road,
WuKu Ind. Zone, Taipei,
Taiwan, R.O.C.
Tel: +886-2-2299-3279
Fax: +886-2-2298-2698



SGS

Certificate No: ED/2006/40086

CERTIFICATE OF EMC COMPLIANCE

SGS-TW Reference No. : ED/2006/40086
Type/Model No. : HF-8367 , HF-8385, HF-8367S.
Product Name : DIAPHRAGM PUMP
Applicant : ALWAYS-JEAK CO., LTD.
Address of Applicant : 3F, NO.22-5, ersheng 2nd siang, Kaohsiung, Taiwan.
SGS approved laboratory : SGS Taiwan
Date of Issue : Apr 24.2006.
Applicable Standards : EN55014-1:2000+A :2001+A2:2002
EN61000-3-2: 2000 ; EN61000-3-3:1995+A1:2001

Conclusion

The apparatus meets the requirements of the above standards and hence fulfills the requirements of EMC Directive 89/336/EEC as amended by Directives 92/31/EEC and 93/68/EEC within CE marking requirement.

Note: This certificate is only valid for the equipment and configuration described, and in conjunction with the test data detailed above.

Authorized Signatory:

SGS TAIWAN LTD.
Jason Lin



Copyright of this certificate is owned by SGS Taiwan EMC Services and may not be reproduced other than in full and with the prior approval of the Manager of SGS Taiwan MD Services.

This document is issued, on the Client's behalf, by the Company under its General Conditions of Service printed hereof. The Client's attention is drawn to the limitation of liability, indemnification and jurisdiction issues defined therein.

Any other holder of this document is advised that information contained herein reflects the Company's findings at the time of its intervention only and within the limits of Client's instructions, if any. The Company's sole responsibility is to its Client and this document does not exonerate parties to a transaction from exercising all their rights and obligations under the transaction documents.

SGSPAPER

04254216

